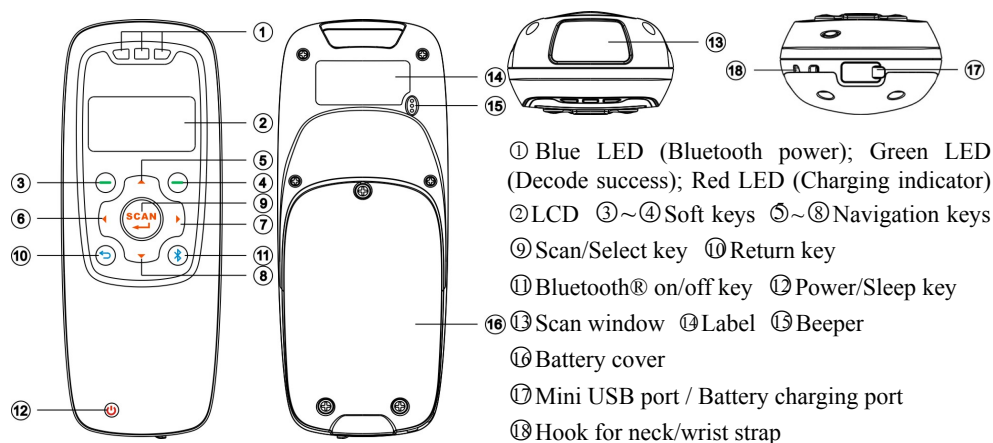


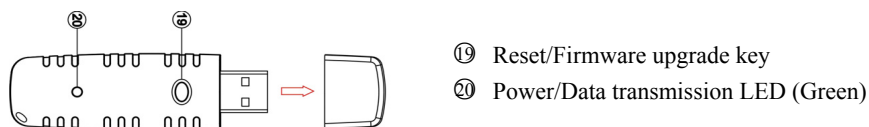
## MS3390 Mobile Scanner Quick Guide


- ☞ A standard packing includes a mobile scanner, a USB cable and a CD (containing software and electrical manuals). Optional accessory includes a Bluetooth USB adapter BA2110 which supports reliable wireless data transmission and an AC/DC adaptor for battery charge.
- ☞ The term “scanner” as used in this guide denotes the mobile scanner.
- ☞ Use dry and soft cloth to clean the scanner.
- ☞ Effective communication range: The communication distance is 30 meters under the condition of temperature at 27 degrees Celsius, sunny day, and visibility of 5 kilometers. Natural surroundings significantly affect the communication distance in practice. The distance drops quickly in the rainy, high-humidity, or heavy haze day; radio interference also shortens the communication distance.
- ☞ Bluetooth uses the 2.4 GHz ISM frequency band. The WLAN also uses the same one. So the coexistence of the scanner and WLAN may cause a strong decline in the effective communication range.
- ☞ The scanner provides a variety of wireless communication modes, and supports batch data mode and U disk mode. It is suggested to read the user manual in details before use.


### Parts of the scanner



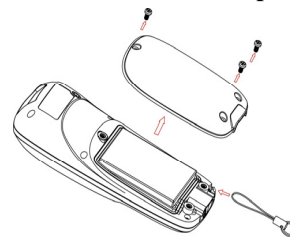
### Parts of BA2110



**Power on the scanner:** Press the power button  for two seconds.

**Power off the scanner:** Press the power button  for two seconds.

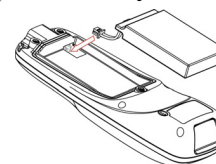
### Attach neck/wrist strap



Note: The neck/wrist strap protects the scanner from being damaged as a result of it being dropped by mistake during movement.

1. Remove the 3 screws from the battery cover (one at a time).
2. Attach the neck/wrist strap by hanging the strap ring around the raised part at the corner.
3. Re-place the battery cover, screw in the 3 screws to tighten the scanner and the battery cover.

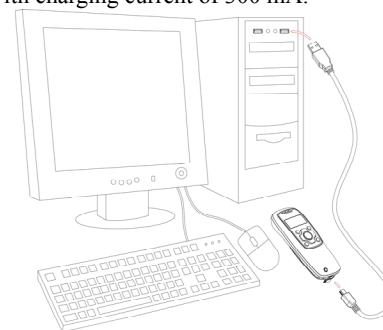
### Replace battery



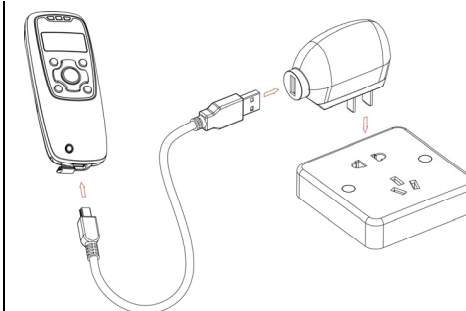
1. Remove the 3 screws from the battery cover (one at a time).
2. Load the battery while sliding it with the connection on the battery pack on the scanner body.
3. Re-place the battery cover, screw in the 3 screws to tighten the scanner and the battery cover.

### Charge battery

1. Please charge the battery before the first time of use. The charging indicator (red LED) turns on when the charging is in process. When the charging process completes, the red LED turns off.
2. The scanner uses a 950 mAh Lithium-ion battery. The charging time is 3.5 hours for fully charged with charging current of 300 mA.



Charge battery by a PC



Charge battery by an AC/DC adapter

### Enter barcode scan status to scan

Power on the scanner, and then press Scan Key once. Hold the scanner close to the barcode and press the Scan Key again. In a moment, the barcode will be displayed on the screen. Make sure the scan line crosses every bar and space of the barcode symbol.

## Establish Bluetooth communication

### LCD Icon indication for Bluetooth

	or blue LED on	Bluetooth is on.		Bluetooth network is working.
	or blue LED off	Bluetooth is off.		Bluetooth network is disconnected.

### Select Bluetooth functionality according to practical need

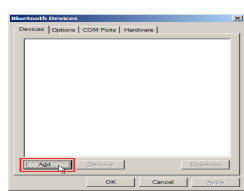
<b>HID Keyboard</b>	The scanner connects to the PC via Bluetooth and behaves like a keyboard.
<b>SPP Master/Slave</b>	The scanner connects to the PC via Bluetooth and behaves like there is a serial connection. A master SPP mainly differs from a slave one in the process of connection and they are identical in the process of use in terms of function. <u>Note: Bluetooth-enabled smart phones and PDAs can host the scanner in general. However, ordinary mobile phones with Bluetooth function can not be a host of the scanner because in most cases neither HID nor SPP profile is supported by them.</u>



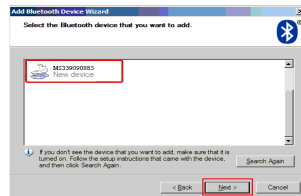
### Configure Bluetooth HID keyboard profile communication

Note: Make sure the Bluetooth module of the scanner is powered on (blue LED is on) and the selected profile is System Setting→Bluetooth→BT HID Keyboard.

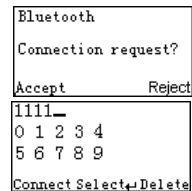
- Step1. Plug a Bluetooth USB adapter into the USB port of the PC.
- Step2. Double-click the Bluetooth icon at the right bottom corner on Windows XP ( 17:39). Alternatively, you may go to Control Panel->Bluetooth Device.
- Step3. Click **Add** to search devices nearby.
- Step4. Click to select “My device is set up and ready to be found” and click **Next**.
- Step5. It takes a few seconds for the Wizard to search devices. The scanner will appear with its “serial number” as the device name, click and select the target scanner. Click **Next**.
- Step6. Click and select “Let me choose my own passkey”. Enter a passkey, e.g. 1111, and click **Next**.
- Step7. The scanner promotes the user to accept the connection request. Press Left Soft Key to accept.
- Step8. Enter a passkey which is exactly the same as that entered from the PC.
- Step9. Wait for a few seconds for Windows to exchange passkeys. Click **Finish**.
- Step10. Run the desired application, such as a Notepad and scan barcodes to check data transmission.



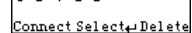
Step 3



Step 5



Step 7

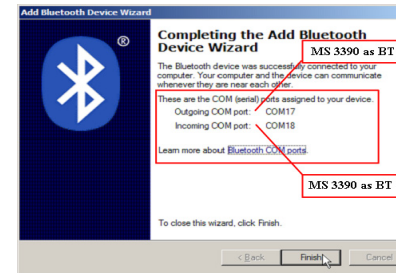


Step 8

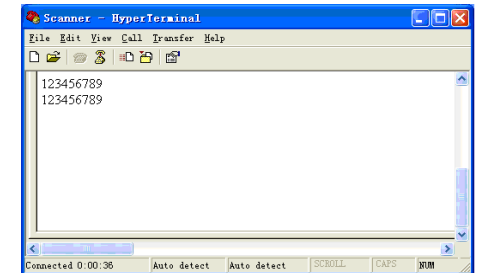
### Configure Bluetooth SPP slave profile communication

Note: Make sure the Bluetooth module of the scanner is powered on (blue LED is on) and the selected profile is System Setting→Bluetooth→BT SPP Slave.

- Step1-9: The same as Configure Bluetooth HID keyboard step 1~9.
- Step10. Run a Serial Port Tool, e.g. HyperTerminal on your computer. This step guarantees the scanner to complete establishing Bluetooth communication. And then scan a barcode to confirm the success of data transmission.



Step 9

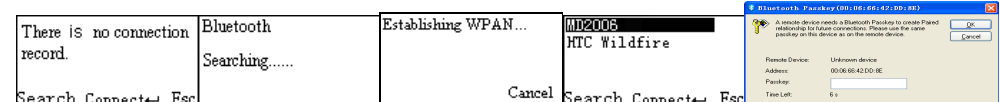


Step 10

### Configure Bluetooth SPP master profile communication

Note: Make sure the Bluetooth module of the scanner is powered on (blue LED is on) and the selected profile is System Setting→Bluetooth→BT SPP Master.

- Step1. Press Left Soft Key to the window below.
- Step2. Press Left Soft Key to trigger searching.
- Step3. Wait for about 20 seconds and then the devices list will be shown.
- Step4. Use Navigation Key to move the cursor and press Scan/Select Key to connect.
- Step5. The remote device will promote user to accept the connection request, and then user enters the passkey. The default passkey of the Bluetooth module of the scanner is “0000”. So enter “0000”, and click **OK**. The Bluetooth device connected to the scanner is labeled √.



Step 1

Step 2

Step 3

Step 4

Step 5

### Configure Bluetooth USB adapter BA2110

Note 1: BA2110 is provided by the manufacturer to support reliable wireless data transmission and is advised in applications whereas unacknowledged communication is unacceptable.

Note 2: Make sure the Bluetooth module of the scanner is powered on (i.e. The blue LED is on).

- Step1. Scan the barcode (see right) on the back of BA2110. The scanner will beep twice to indicate a successful scan.
- Step2. Connect BA2110 to a PC within 10 seconds. Then wait for about 5 seconds. The scanner will give 2 long beeps upon a successful connection, or 3 short beeps upon a failed connection.

